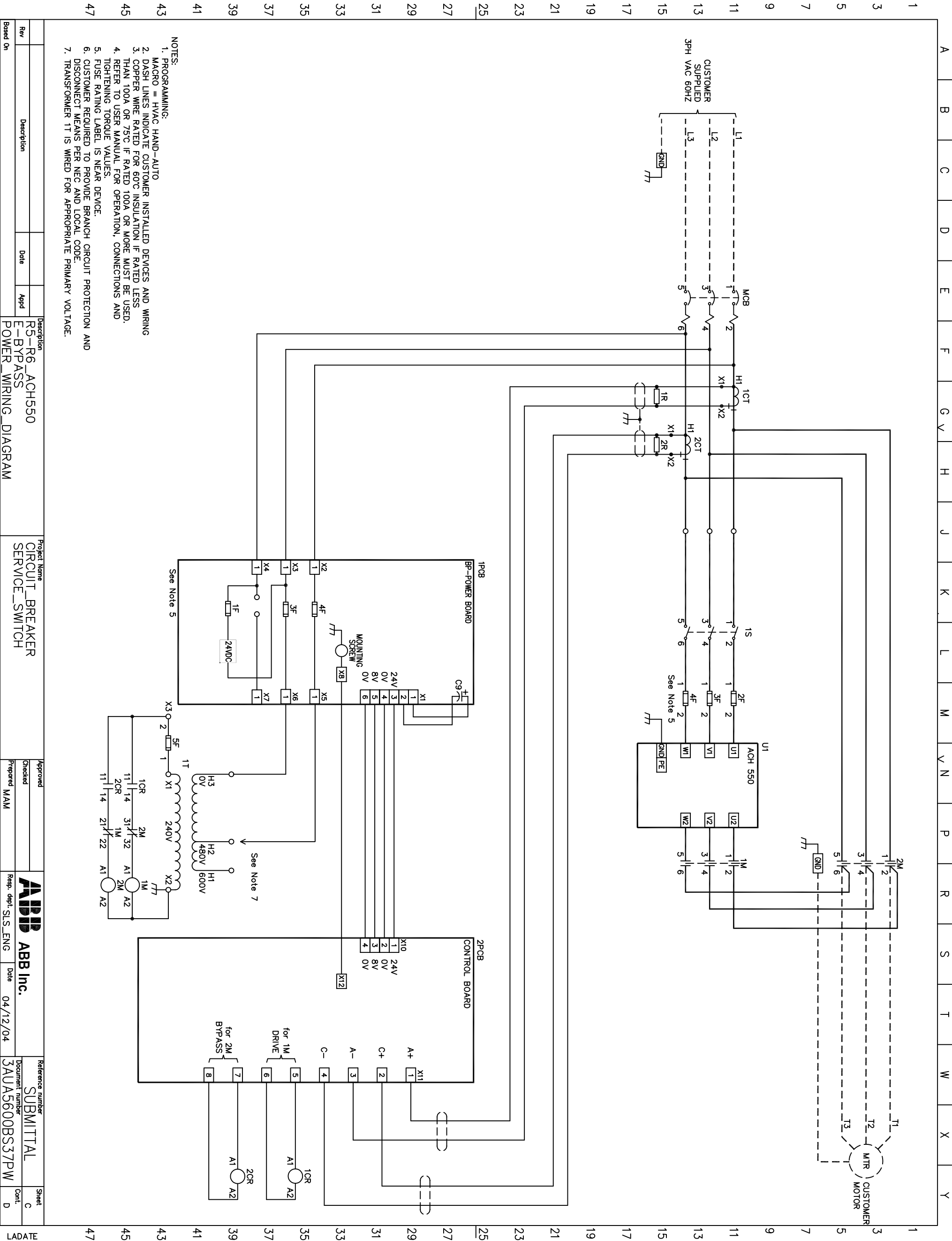


We reserve all rights in this document and the information contained therein. Reproduction, use, or disclosure to third parties without express written authority is strictly forbidden. © ABB Automation Inc. (US)

F-3BUA0980502-M, rev. 0 8-21-03



- NOTES:
1. PROGRAMMING: MACRO = HVAC HAND-AUTO
  2. DASH LINES INDICATE CUSTOMER INSTALLED DEVICES AND WIRING
  3. COPPER WIRE RATED FOR 60°C INSULATION IF RATED LESS THAN 100A OR 75°C IF RATED 100A OR MORE MUST BE USED. REFER TO USER MANUAL FOR OPERATION, CONNECTIONS AND TIGHTENING TORQUE VALUES.
  4. REFER TO USER MANUAL FOR OPERATION, CONNECTIONS AND TIGHTENING TORQUE VALUES.
  5. FUSE RATING LABEL IS NEAR DEVICE.
  6. CUSTOMER REQUIRED TO PROVIDE BRANCH CIRCUIT PROTECTION AND DISCONNECT MEANS PER NEC AND LOCAL CODE.
  7. TRANSFORMER T1 IS WIRED FOR APPROPRIATE PRIMARY VOLTAGE.

Rev	Description	Date	Appd	Description	Project Name	Approved	Checked	Responsible	Date	Reference number	Sheet
Based On				R5-R6 ACH550 E-BYPASS POWER_WIRING_DIAGRAM	CIRCUIT_BREAKER SERVICE_SWITCH	MAM		SLS_ENG	04/12/04	SUBMITTAL	C

DATE 47